

2D CAD drawing

TCPH_ASSY

TCPH_ASSY

Approval Process			
	Name	Action	Affiliation
Author	Vauquelin J.	24 May 2018:signed	IO/DG/COO/CIO/DO/CAD
Co-Authors			
Reviewers	Beaudoire S. Bhardwaj A. Dube V. More V.	30 May 2018:recommended 25 May 2018:recommended 25 May 2018:recommended (Fast Track) 29 May 2018:recommended	IO/DG/COO/CIO/DO/CAD IO/DG/COO/CST/TAD/ICA IO/DG/COO/CST/TAD/ICA IO/DG/COO/CST/TAD/ICA
Approver	Petit P.	31 May 2018:approved	IO/DG/COO/CST/TAD/ICA
Document Security: Internal Use RO: Bhardwaj Anil			
Read Access	LG: TCPH task force team, LG: Cryostat IO team, AD: ITER, AD: External Collaborators, AD: IO_Director-General, AD: EMAB, AD: Auditors, AD: ITER Management Assessor, project administrator, RO, GG: CEA Decommissioning Experts, LG: TCPH FDR - Add Rights, LG: CAD , AD: DA-IN, LG: Section Scheduling, LG:...		

<i>Change Log</i>			
TCPH_ASSY (PVKBUS5)			
<i>Version</i>	<i>Latest Status</i>	<i>Issue Date</i>	<i>Description of Change</i>
v1.0	Signed	16 Sep 2014	
v1.1	Signed	05 Dec 2014	Design improvement for Cryopump interface
v1.2	Signed	05 Dec 2014	Design improving for Cryopump interface
v1.3	Signed	08 Dec 2014	Monitoring connectors informations update
v1.4	Approved	13 Mar 2017	material update following comments
v1.5	Approved	21 Jul 2017	draft version temporary flange tag correction
v1.6	Revision Required	03 Apr 2018	DR-34: Removal of a Diagnostic penetration DR-35: Addition of the TCPH Type D for the Port 12.
v1.7	Approved	24 May 2018	- REMOVAL OF THE ITEM 08 IN THE BOM (PRESENT IN THE DRAWING DEDICATED TO THE TCPH BELLOWS) - UPDATE OF THE TYPICAL WALL OPENING VIEW.

ITER_D_PVKBU5 v1.7	2	3	4	5	6	7	8																																																
A																																																							

A

B

C

D

E

F

G

H

I

J

K

L

A

B

C

D

E

F

G

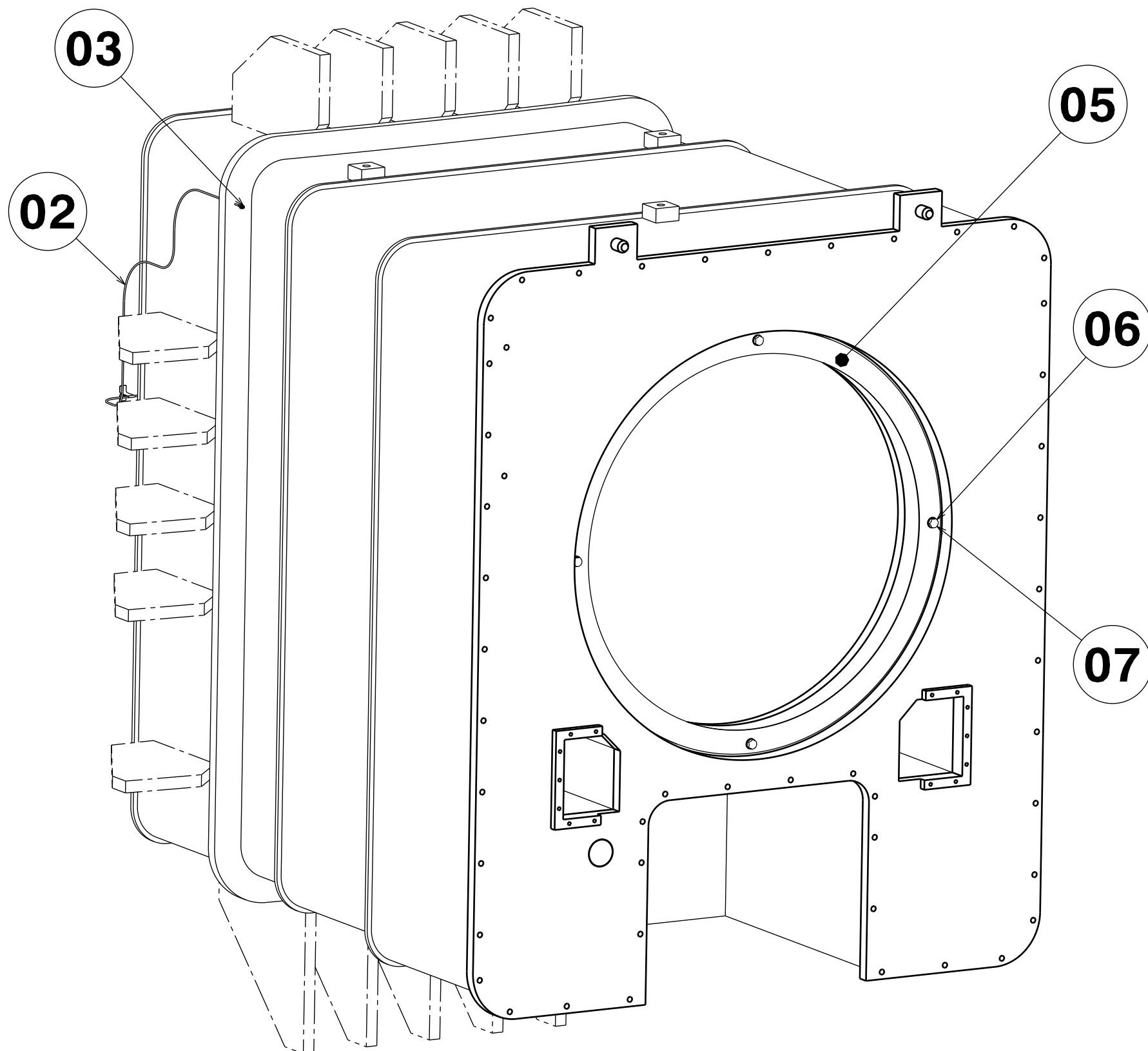
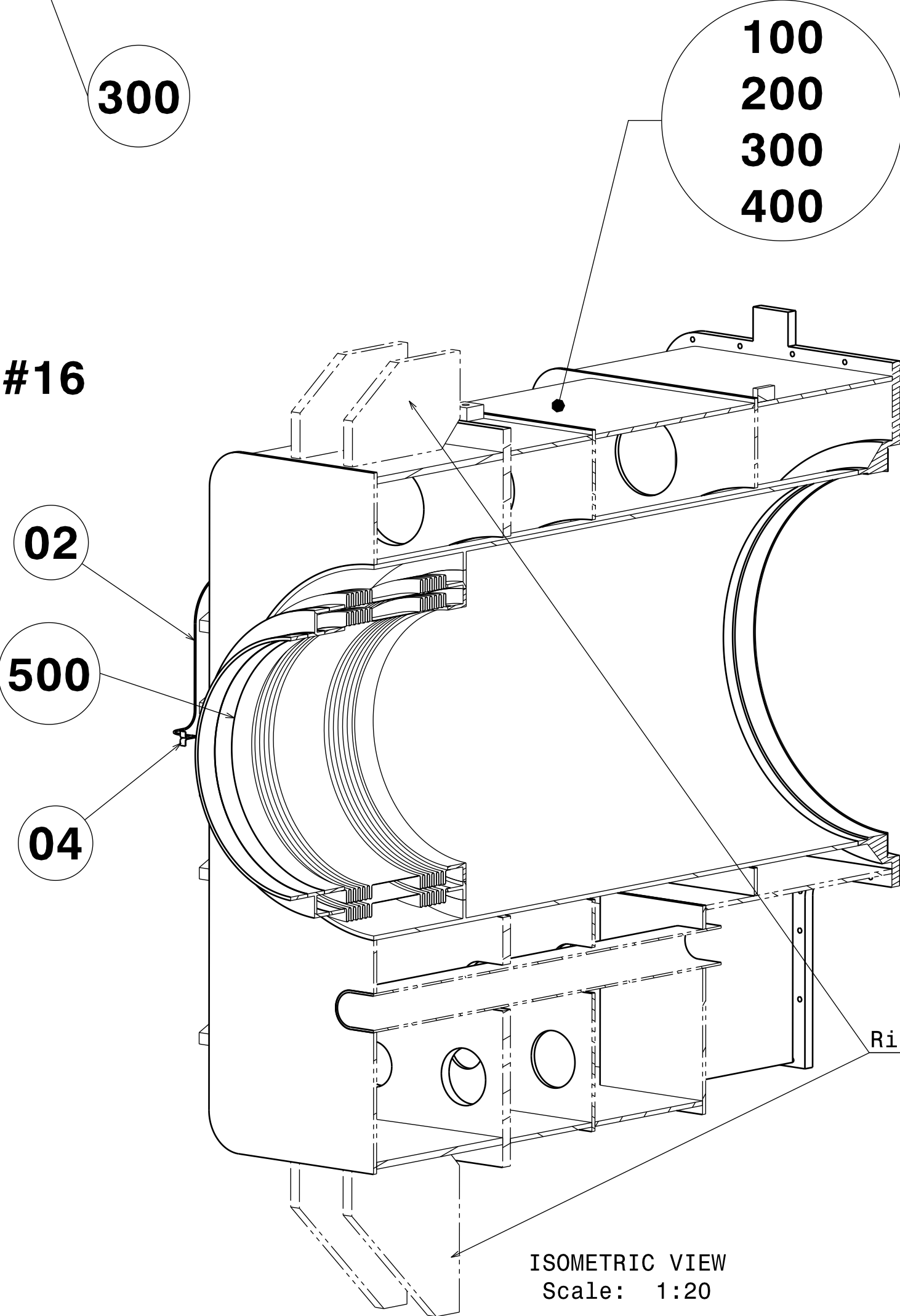
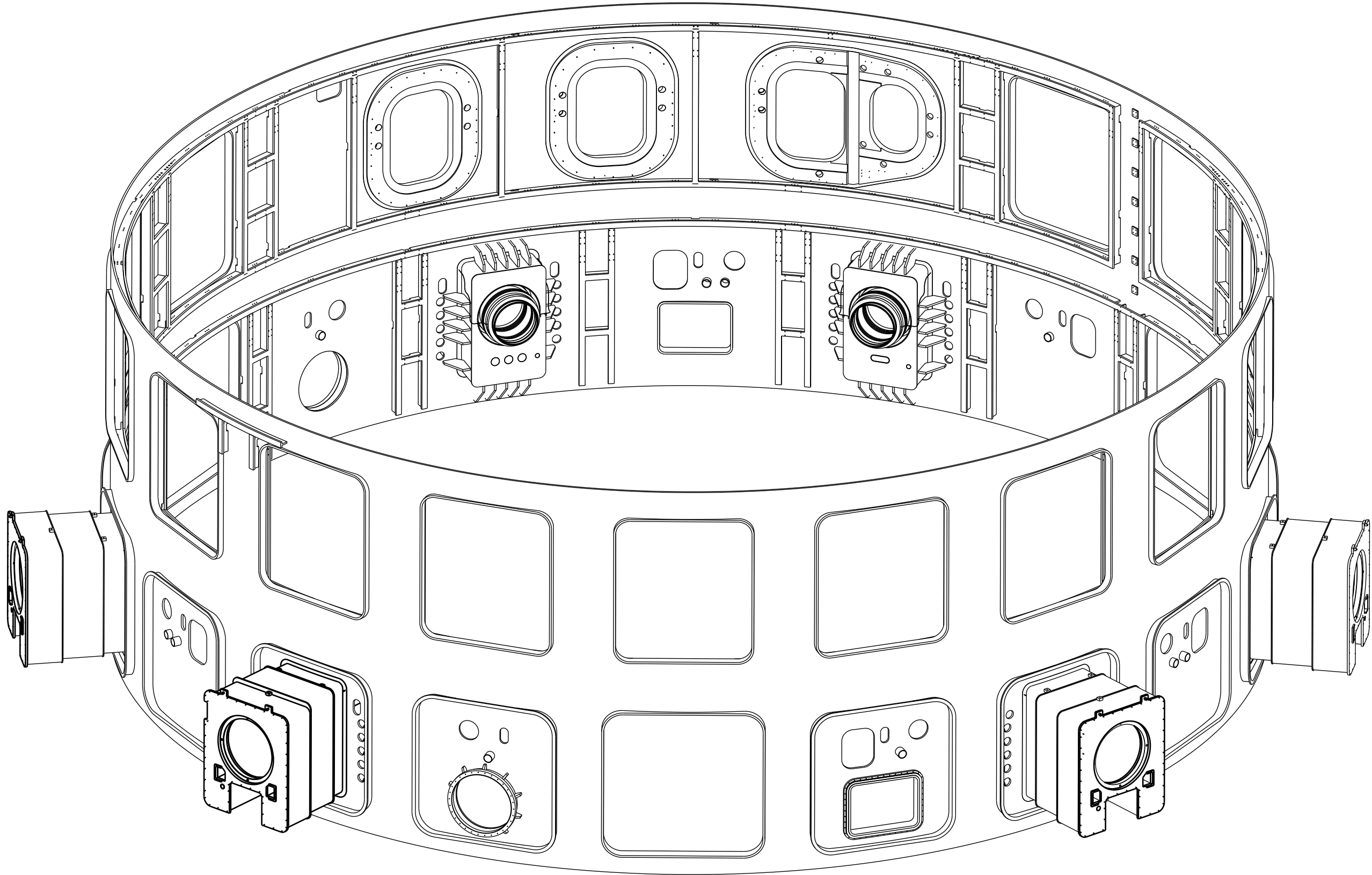
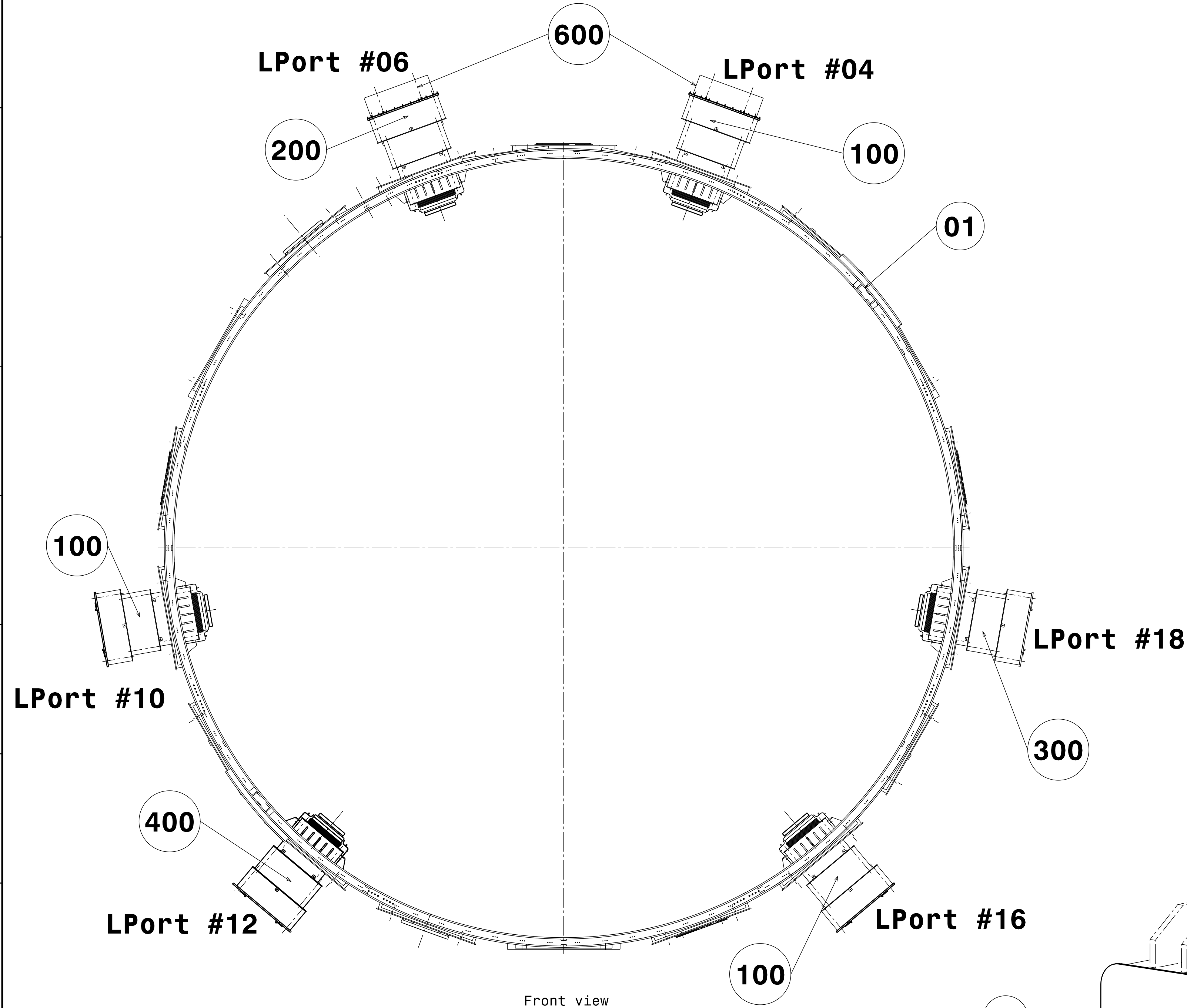
H

I

J



K

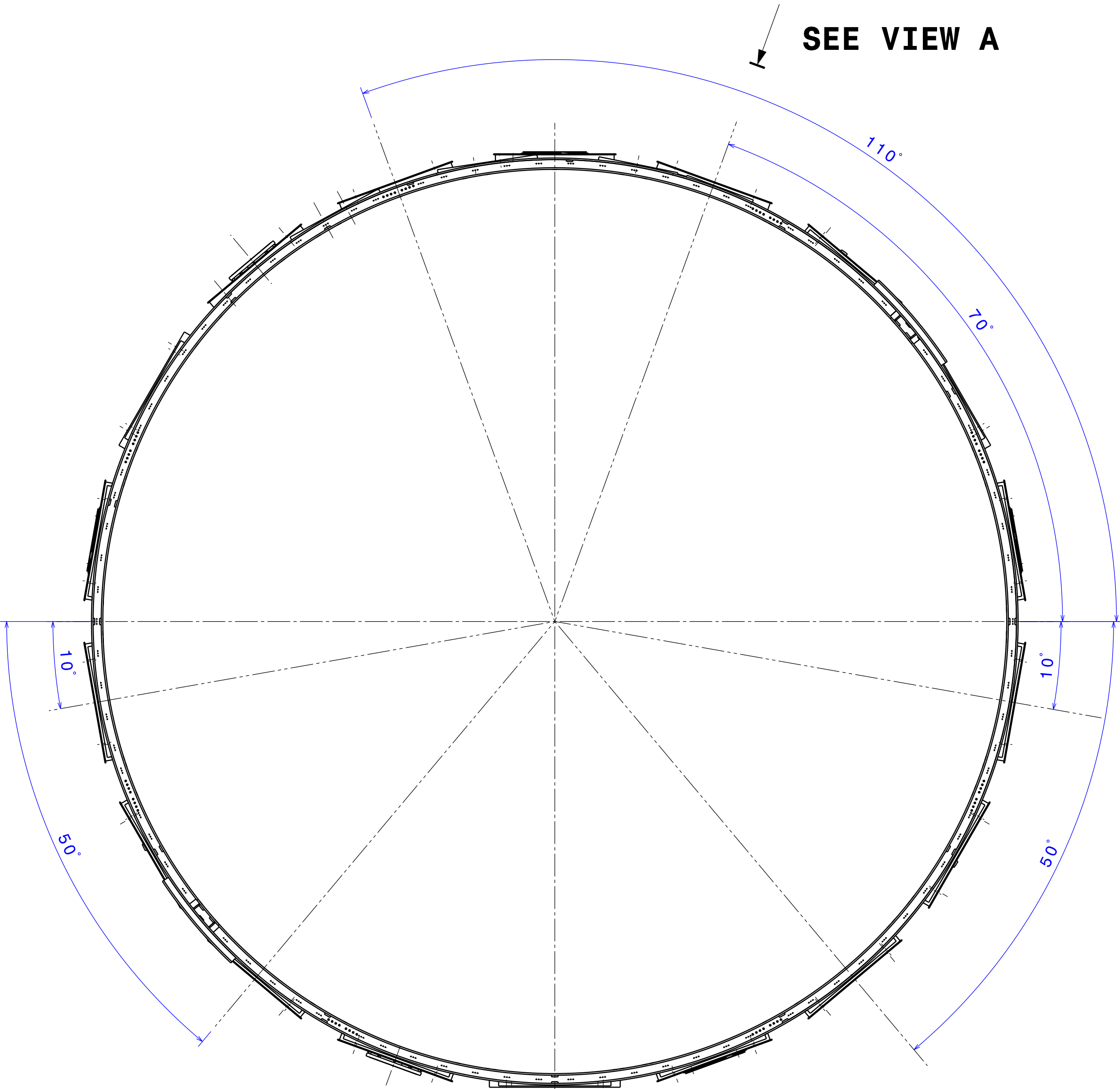
L



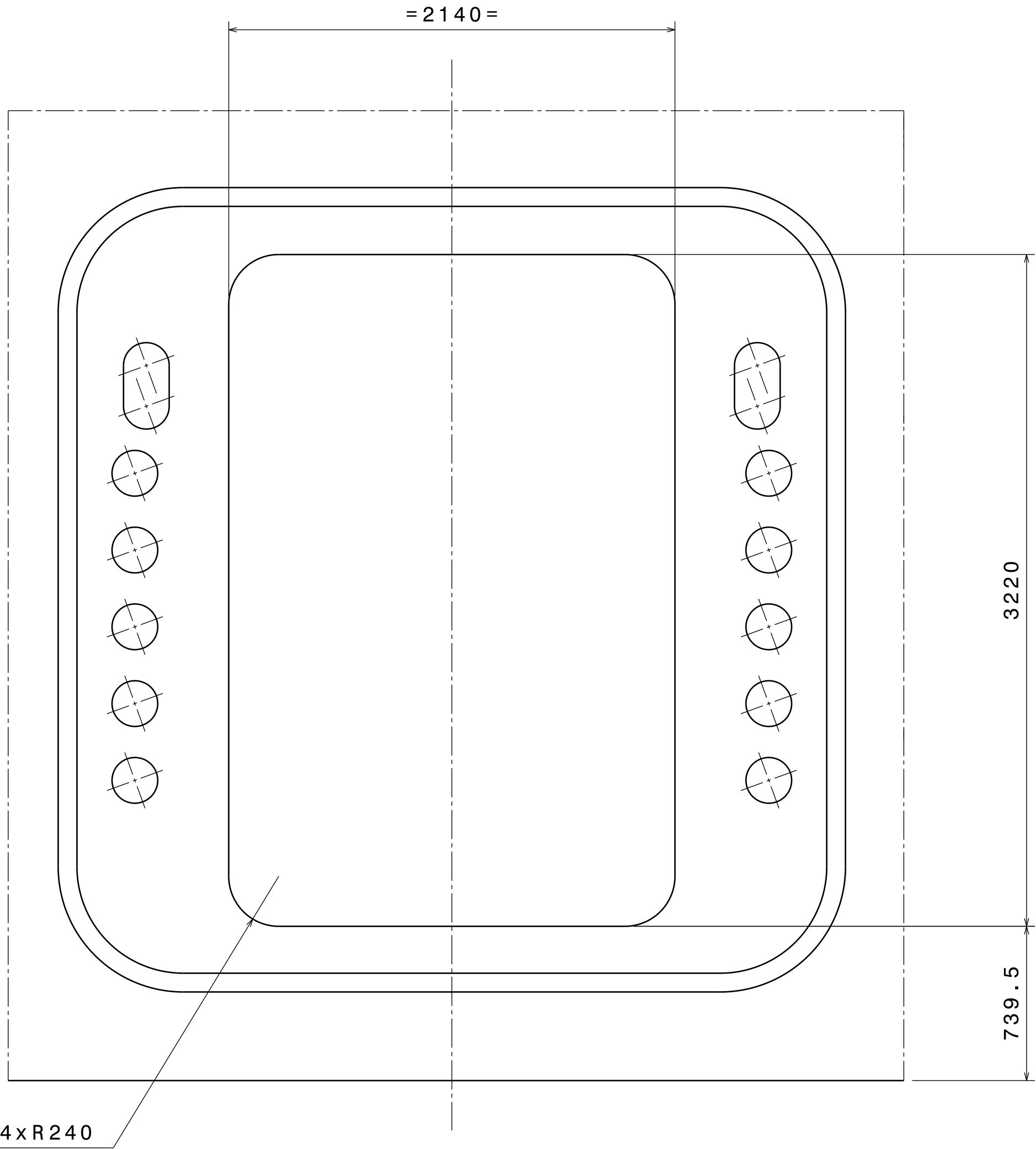
Bill of material				
Part/Assy Number	Part/Assy reference	Qty	Material	Remarks
01	CR_LC_DET	1	SS 304/304L	See sheet 3
100	CR_TCPH_A_ASSY	3	SS 304/304L	See Drawing 034445
200	CR_TCPH_B_ASSY	1	SS 304/304L	See Drawing 034460
300	CR_TCPH_C_ASSY	1	SS 304/304L	See Drawing 034461
400	CR_TCPH_D_ASSY	1	SS 304/304L	See drawing 046022
500	CR_TCPH_BELLOWS_ASSY	6	SS 304L	See Drawing 034352
02	TCPH_MONITORING_PIPE	12	SS 304L	OD: 6mm; th. 1mm; L:2.2m
03	PIPE MALE CONNECTOR	12		SWAGelok: 6LV-4-VCR-3S-6MTB7 / SS-4-VCR-4
04	TCPH_MONITORING_CLAMP	12	SS 304L	
05	TCPH_PROTECTION_PLATE	6	Aluminium	See Drawing 043730
06	SCREW_M24x50mm	4x6	SA - 193 GrB8	
07	WASHER_M24	4x6	SS 304	
600	CR_TCPH_TEMPORARY_FLANGE_ASSY	2	SS 304L	See sheet 4

Ribs (Part of the Cryostat)

DRW CAD ID PRP3HM		APPROVED BY PETITPA		ITER Organization		LEGAL OWNER	
LINKED RV5 PT ID U2L8RU		TECHNICAL REF VITUPIG		<div>INTERNAL USE</div> <div>When received pursuant to a contract or agreement, the confidentiality clause therein shall be applicable. When received during tender phase treat as confidential.</div> <div> © 2016 ITER International Organization. All rights reserved.</div>			
LINKED 3D ID -----		DRAWN BY VAUQUEJ					
PBS TITLE Cryostat & VVPS Cryostat Lower Cylinder		SAFETY CLASS ---		DRAWING TITLE TCPH ASSY			
DATE OF ISSUE 15 May 18		PT STATUS CD		QUALITY CLASS ---		GERERAL DESCRIPTION	
DR STATUS D		SCALE 1:100		DOCUMENT TYPE Assembly Drawing			
THIRD ANGLE PROJECTION 		FORMAT A1		PBS NUMBER 24 CR LC		DRAWING NUMBER 034280	
				SHEET 02		TOTAL SHEETS 05	
						REVISION ---C	




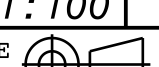
FRONT VIEW



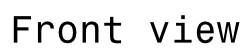
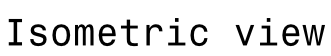
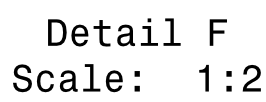
AUXILIARY VIEW A
Scale: 1:20

Typical Opening for 6 TCPS

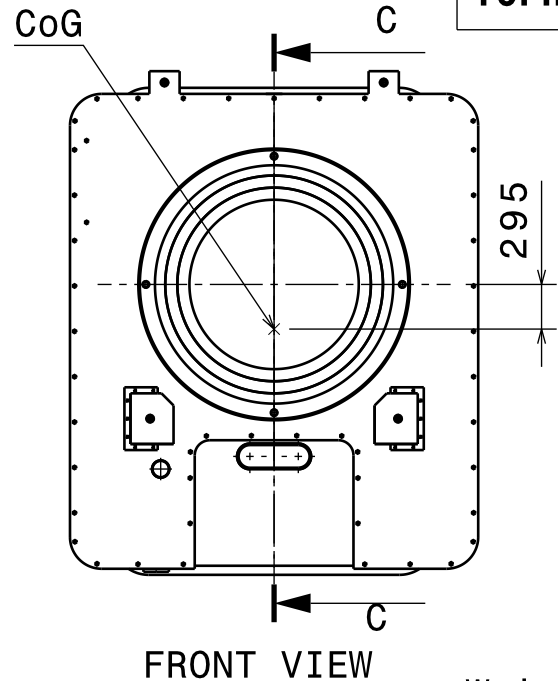
Note: Protect Sealing Face after manufacture by a temporary clean 5mm thick aluminium disc bolted with M24.

DRW CAD ID PRP3HM		APPROVED BY PETITPA		ITER Organisation		LEGAL OWNER	
LINKED RV5 PT ID U2L8RU		TECHNICAL REF VITUPIG		<div>INTERNAL USE</div> <div>When received pursuant to a contract or agreement, the confidentiality clause therein shall be applicable.</div> <div>When received during tender phase treat as confidential.</div> <div></div>			
LINKED 3D ID -----		DRAWN BY VAUQUEJ		<div>TCPH_ASSY</div> <div>WALL OPENINGS DEFINITION</div>			
PBS TITLE Cryostat & VWPSS		SAFETY CLASS ---					
DATE OF ISSUE 15 May 18		PT STATUS CD		DOCUMENT TYPE Assembly Drawing			
DR STATUS D		SCALE 1:100					
THIRD ANGLE PROJECTION 		FORMAT A1		PBS NUMBER 24 CR LC		DRAWING NUMBER 034280	
				SHEET 03		N° OF SHEETS 05	
						REVISION -- C	

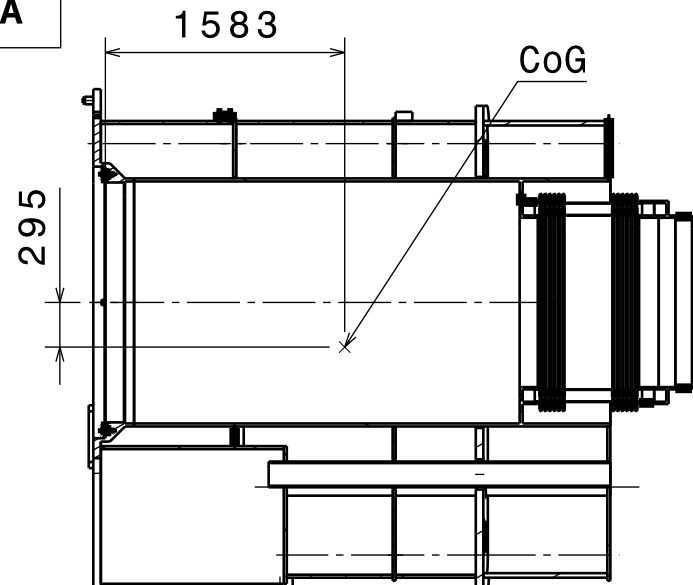
605	SCREW M20x 120
-----	----------------



Note: The temporary flange is in place only in case of Remote Handling operation.

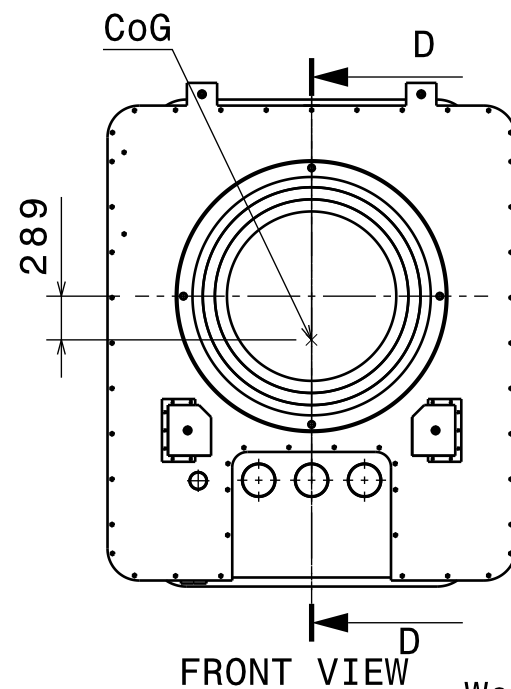


TCPH Type A

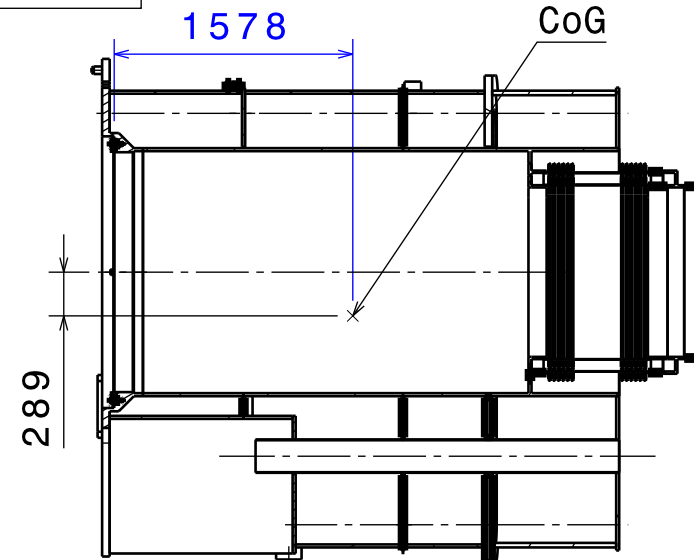


SECTION VIEW C-C

Weight: 16.58 tons

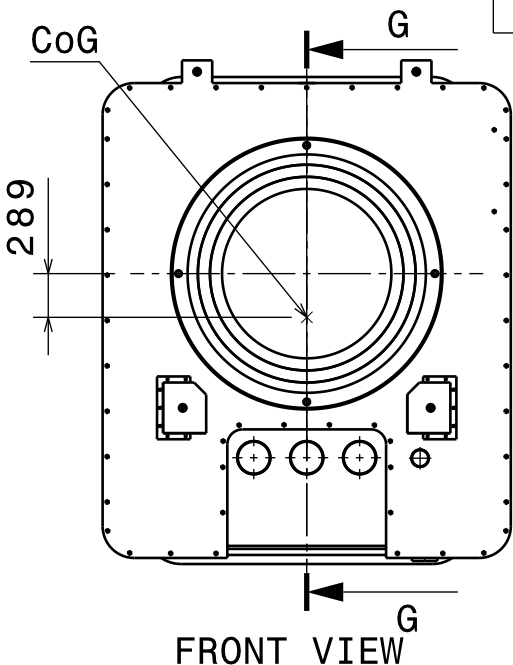


TCPH Type B

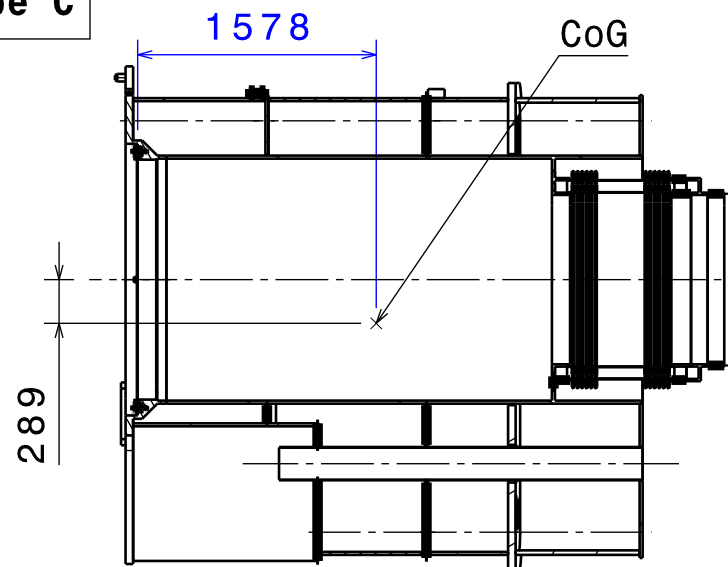


SECTION VIEW D-D

Weight: 16.48 tons

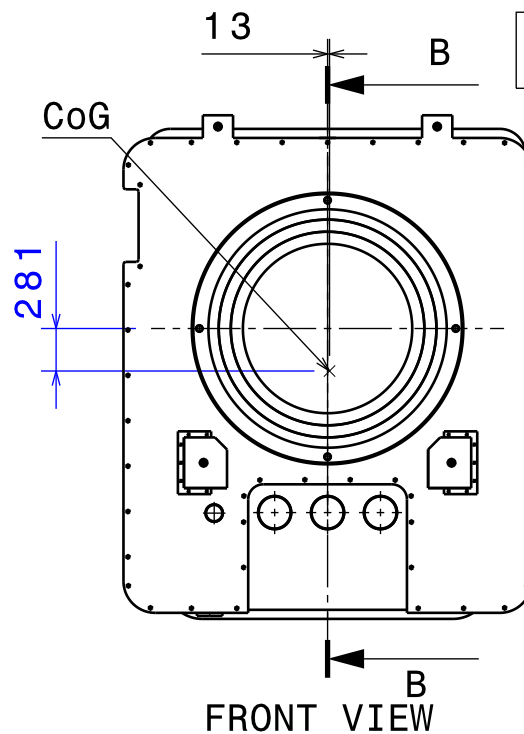


TCPH Type C

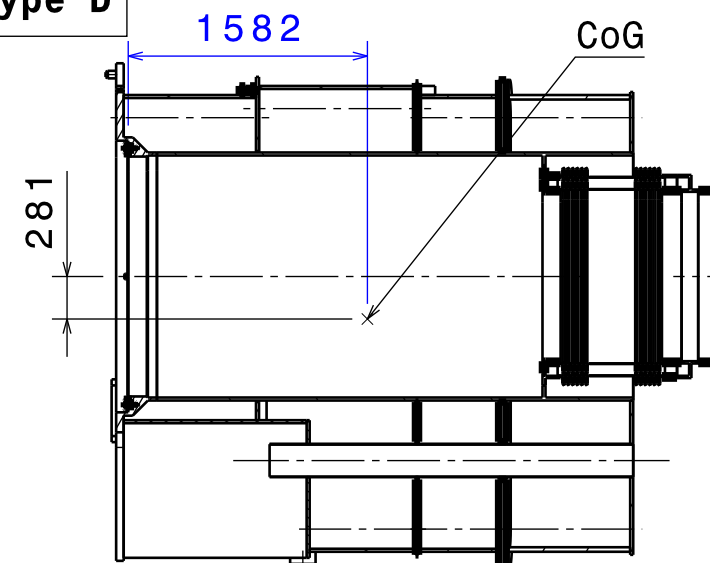


SECTION VIEW G-G

Weight: 16.48 tons




TCPH Type D



SECTION VIEW B-B

Weight: 16.5 tons

Note: Weights without ribs, corresponding to the configuration at the assembly stage.

DRW CAD ID			PRP3HM			APPROVED BY			ITER Organization			LEGAL OWNER											
LINKED EV5 PT ID			U2L8RU			PETITPA			<div>INTERNAL USE</div> <div>When received pursuant to a contract or agreement, the confidentiality clause therein shall be applicable. When received during tender phase treat as confidential.</div> <div>china EU india japan korea russia USA</div>														
LINKED 3D ID			-----			VITUPIG																	
PBS TITLE Cryostat & VVPSS Cryostat Lower Cylinder						DRAWN BY			DRAWING TITLE TCPH_ASSY TCPH WEIGHT AND CENTER OF GRAVITY														
						VAUQUEJ																	
						DATE OF ISSUE			PT MATURITY			PT VERSION			SAFETY CLASS								
15 May 18			CD			--F			---														
DR STATUS			SCALE			PT STATUS			QUALITY CLASS			DOCUMENT TYPE Assembly Drawing											
D			1:50			D			---														
THIRD ANGLE PROJECTION 						FORMAT			PBS NUMBER			DRAWING NUMBER			SHEET			N°OF SHEETS			REVISION		
						A3			24 CR LC			034280			05			05			- - C		